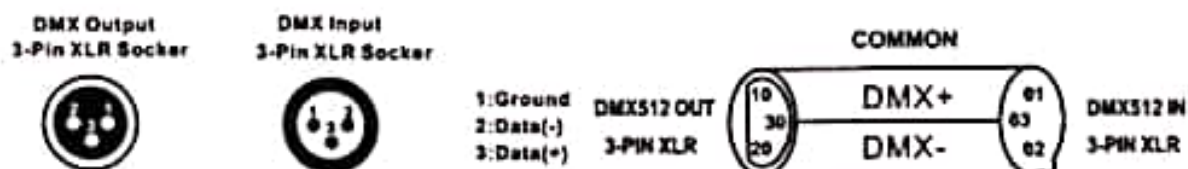


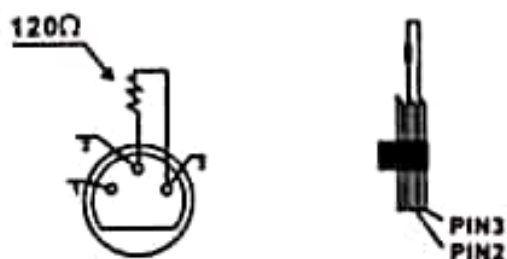
2.4 DMX-512 control connection

Connect the provided XLR cable to the female 3-pin XLR output of your controller and the other side to the male 3-pin XLR input of the moving head. You can chain multiple Moving head together through serial linking. The cable needed should be two core, screened cable with XLR input and output connectors. Please refer to the diagram below.



2.4 DMX-512 connection with DMX terminator

For installations where the DMX cable has to run a long distance or is in an electrically noisy environment, such as in a discotheque, it is recommended to use a DMX terminator. This helps in preventing corruption of the digital control signal by electrical noise. The DMX terminator is simply an XLR plug with a 120 resistor connected between pins 2 and 3, which is then plugged into the output XLR socket of the last fixture in the chain. Please see illustrations below.



3DMX Channel Table 21CH

Channel	DMX values	Functions
1 Pan	0-255	0-360°
2 Pan 16 Bit	0-255	16bit adjustable
3Tilt	0-255	0-360°
4 Tilt 16 Bit	0-255	16bit adjustable
5Pan/Tilt Speed	0-255	From fast to slow
6Tilt	0-255	0-360°

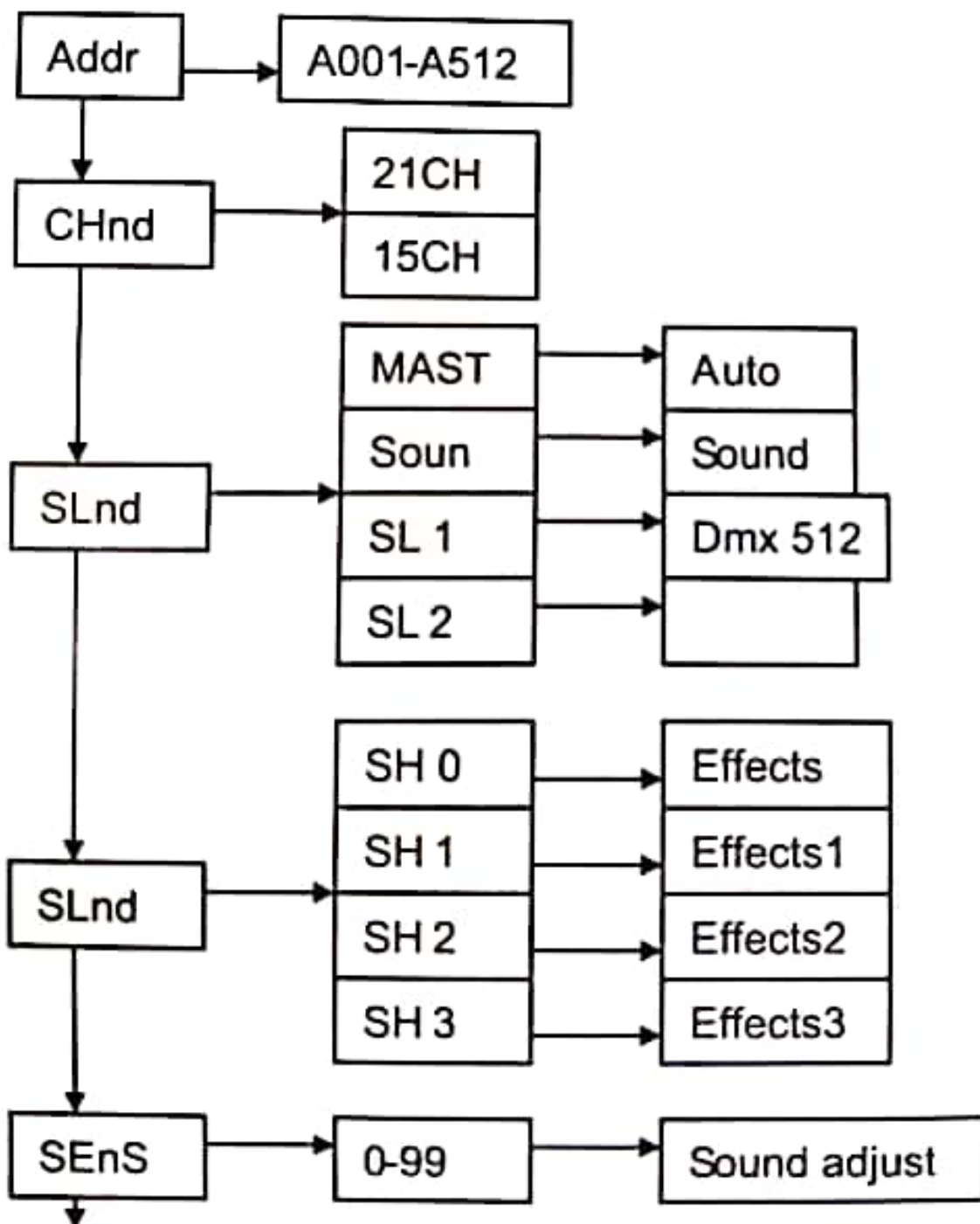
7 Dimming	0~255	From dark to light
8 Strobe	0~3	off
	4~7	open
	8~215	Strobe effect from fast to slow
	216~255	open
9Red	0~255	From dark to light
10 Green	0~255	From dark to light
11 Blue	0~255	From dark to light
12 White	0~255	From dark to light
13Red 1	0~255	From dark to light
14 Green 1	0~255	From dark to light
15 Blue 1	0~255	From dark to light
16White 1	0~255	From dark to light
17 X-Y auto	0~255	built-in function
18 X-Y auto-speed	0~255	built-in function
19 Change colors	0-255	Change colors effects
20 colors speed	0-255	change colors speed
21 reset	245~250	reset

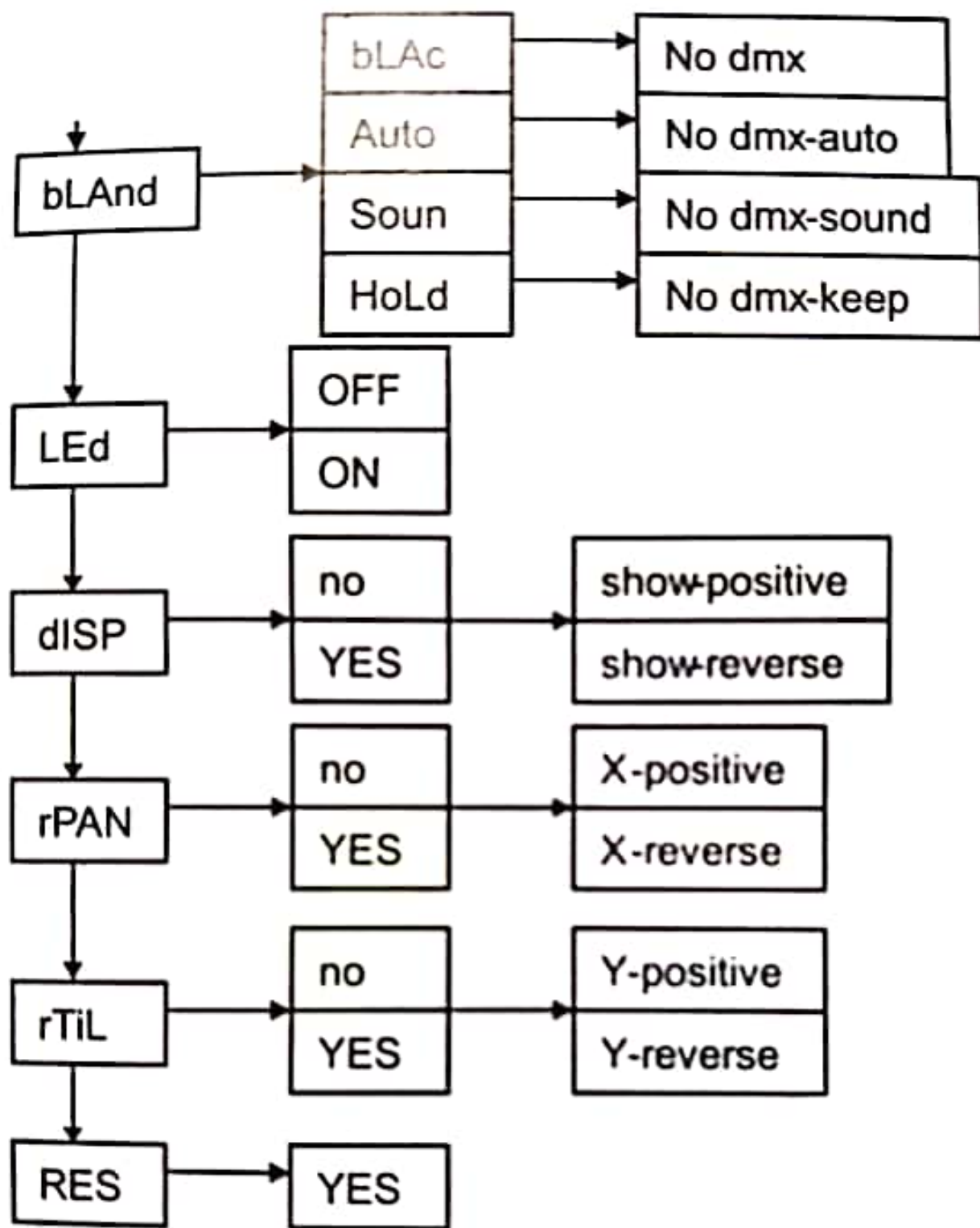
15CH

Channel	DMX values	Functions
1 Pan	0~255	0~540°
2Tilt	0~255	0~270°
3 Pan/Tilt Speed	0~255	From fast to slow
4Tilt	0~255	0~360°
5 Dimming	0~255	From dark to light
6 Strobe	0~3	off
	4~7	open
	8~215	Strobe effect from fast to slow
	216~255	open
7Red	0~255	From dark to light

8 Green	0-255	From dark to light
9 Blue	0-255	From dark to light
10 White	0-255	From dark to light
11 X-Y auto	0-255	built-in function
12 X-Y auto-speed	0-255	built-in function
13 Change colors	0-255	Change colors effects
14 colors speed	0-255	change colors speed
15 reset	245-250	reset

4 :MENU FUNCTION





3 TECHNICAL PARAMETERS

POWER SUPPLIE

Input power: AC 100-240V 50/60 Hz

Power consumption : 150 W

DMX channel: 15/21 channels

Movement: Pan/Tilt: X axis 540 degree, Y axis 190 degree

Control mode: DMX512/Master-Slave/Auto run/sound

Display: LED display

8 internal program, sound mode can control by DXM 51